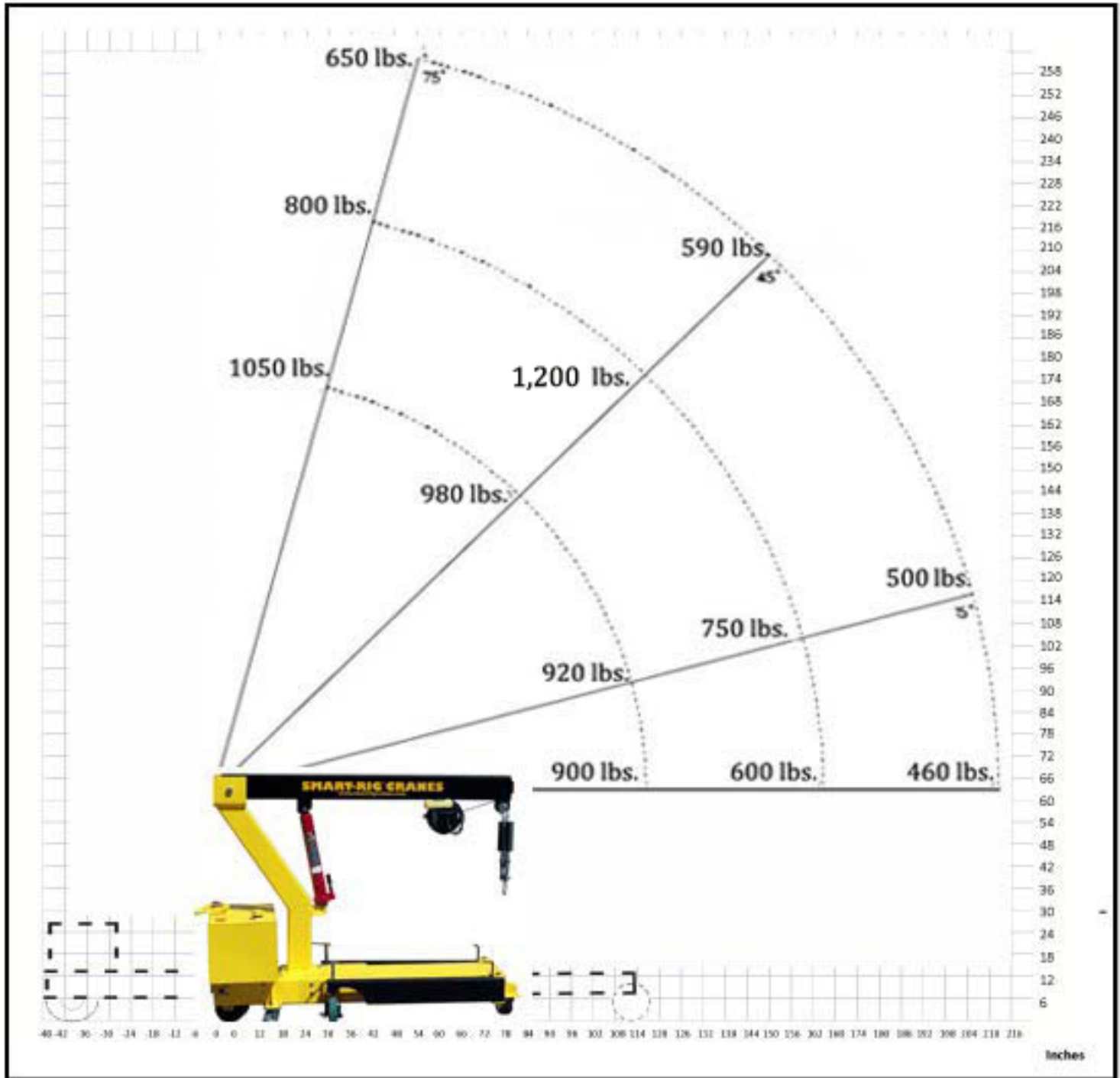


SMART-RIG™ CRANES

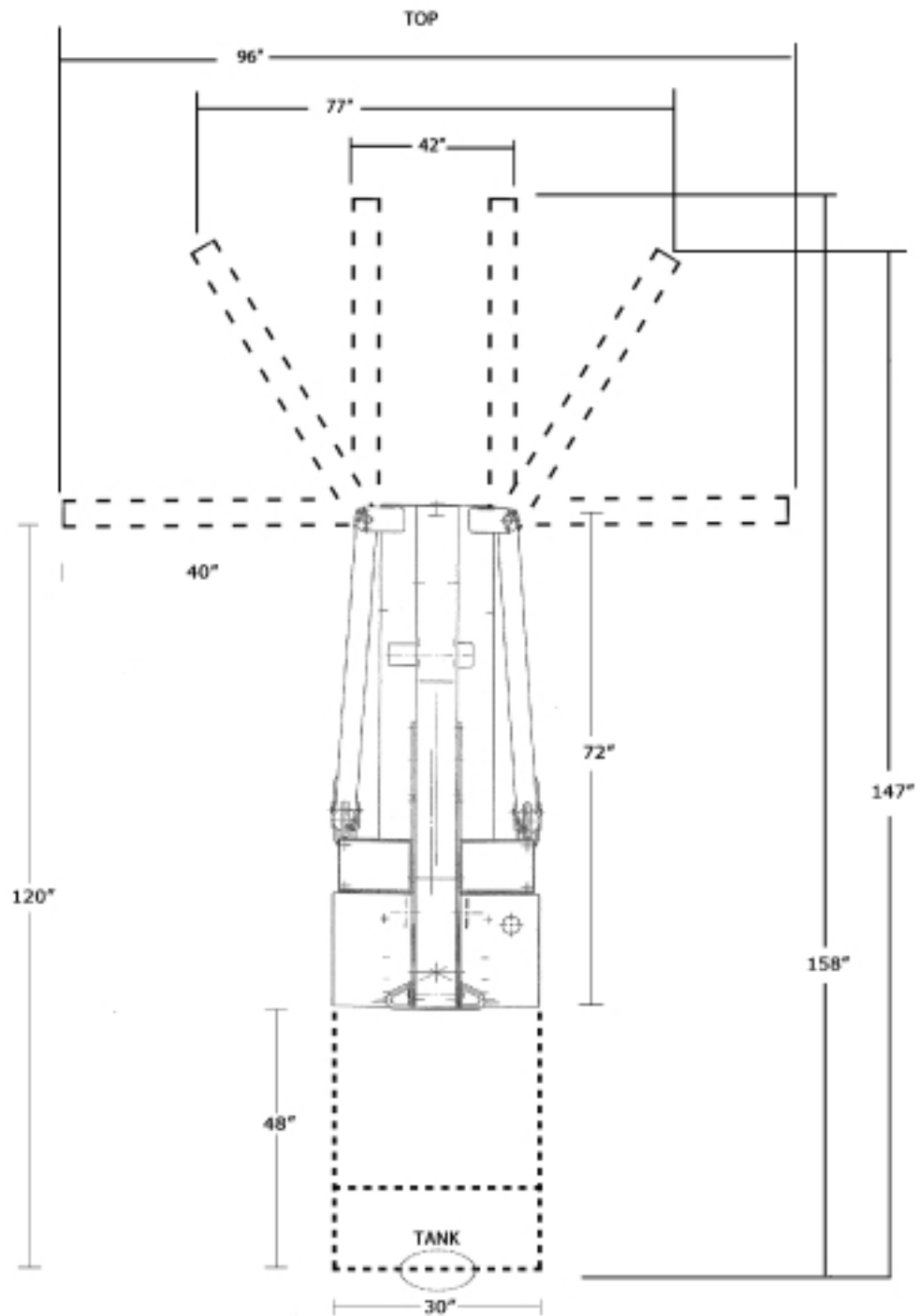
Load Bearing: T1 Model



CONTACT: SMARTRIGCRANES.COM

Phone: (714) 655-0975 Fax: (714) 707-4241
PO BOX 11714 Newport Beach, CA 92658

SMART-RIG™ CRANES



CONTACT

P: (714) 655-0975
F: (714) 707-4241
PO 11714
Newport Beach, CA 92658
www.smartrigcranes.com

SMART-RIG™ CRANES

T1 Model - Electric / Hand Pump Jack

TECHNICAL SPECIFICATIONS

Weight: 1,450 lbs.
Weight with water tank filled w/ 47 gallons: 1,850 lbs.
Max load capacity: 1,200 lbs.
Manual/hand pump Jack raises boom
50 ft. cable w/ brake and hook attachment (extra cable extensions available)
Winch speed 10 FPM. Hand controls.
Pick and carry abilities.
Wheels: 8 in. polyurethane on iron
Counterweight system: water-tank 400 lbs. capacity
Hook height: 18' 3"
Fits through doorways and inside elevators.
Magnetic degree finder located on side of boom for set-ups (see load chart)
Steering: 2 back wheels connected to Handle. Rear steer brake.
Powder coated protection
For use on interior and exterior surfaces.
Warranty: 1 year on parts & manufacturing welds/defects



www.smartrigcranes.com
Phone: 714.655.0975